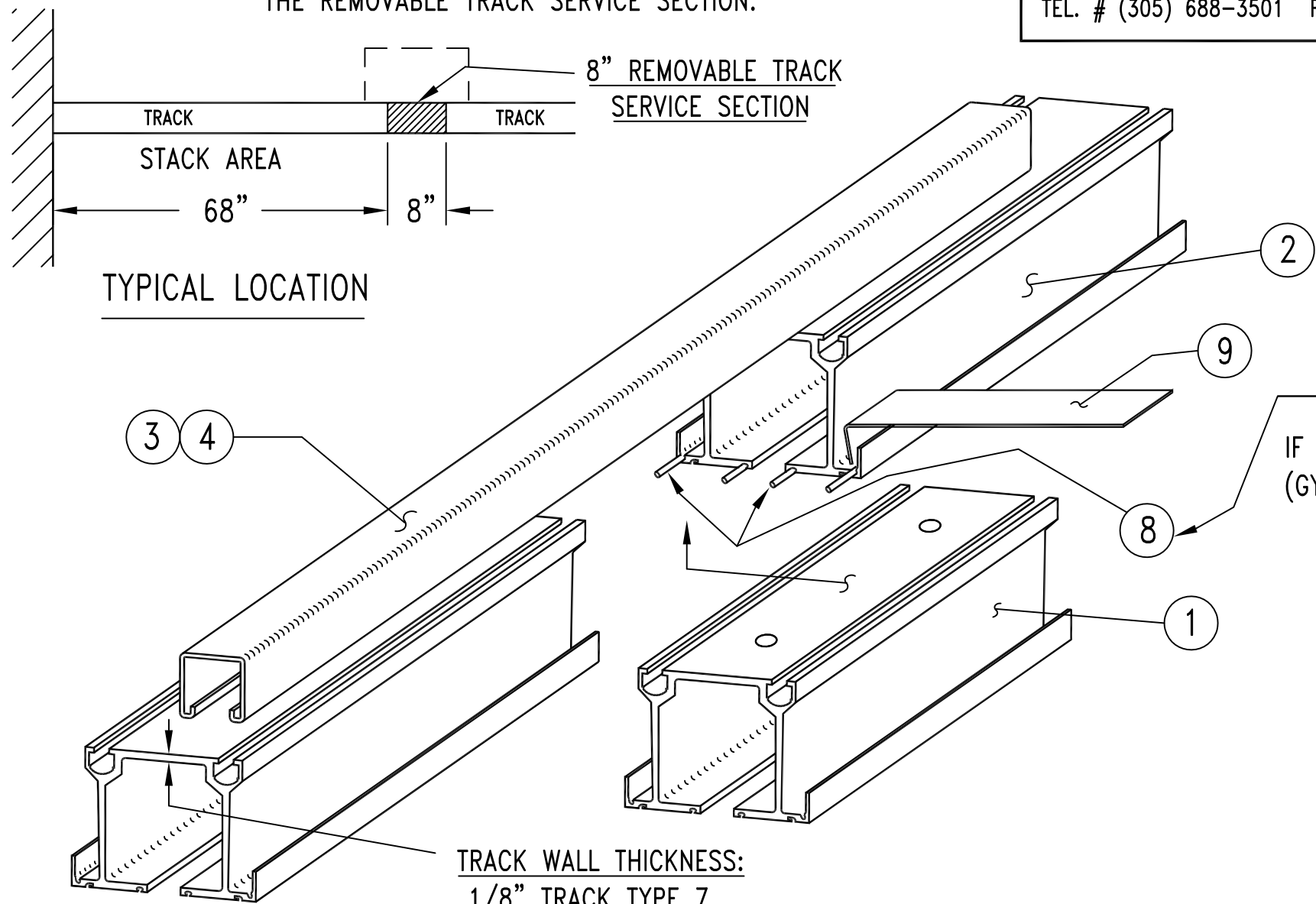


NOTE:

IF TRACK IS INSTALLED IN A "HARD" CEILING (GYPSBOARD or PLASTER), AN ACCESS AREA (1' x 1') SHOULD BE PROVIDED (by others) ALONGSIDE THE REMOVABLE TRACK SERVICE SECTION.

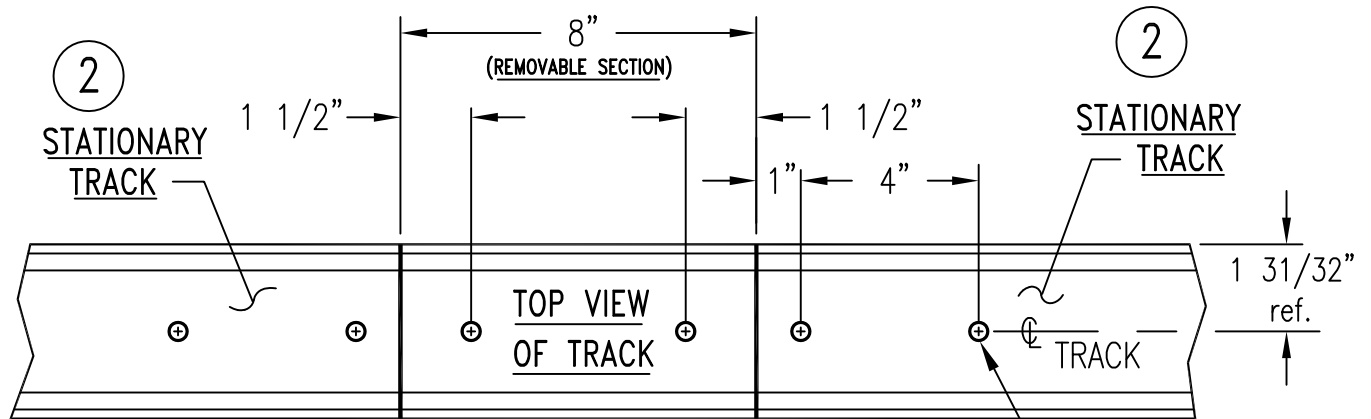
PANELFOLD
 P.O. BOX # 683130 MIAMI, FL. 33168
 TEL. # (305) 688-3501 FAX # (305) 688-0185

8" REMOVABLE TRACK SECTION TYPE 7 or 8 FOR PAIRED or CONTINUOUSLY HINGED PANELS			
ITEM	PART #	DESCRIPTION	QTY.
1	23323	8" REMOVABLE TRACK SECTION (specify type 7 or 8)	1
2	3371 or 3365	TRACK TYPE 7 or TRACK TYPE 8	—
3	12024	UNISTRUT CHNL. 24" long (# P 1000)	1
4	12026	UNISTRUT NUTS 3/8-16 (# P 1008)	6
5	K-178	HEX HD. BOLT 3/8-16 x 1"	6
6	5235	3/8" FLAT WASHER	6
7	14025	3/8" LOCK WASHER	6
8	5622	STEEL SPLICE PINS 1/8" dia. x 7"	8
9	23315	SPLICE PIN INSTALLATION TOOL	1



TRACK WALL THICKNESS:
 1/8" TRACK TYPE 7
 3/16" TRACK TYPE 8

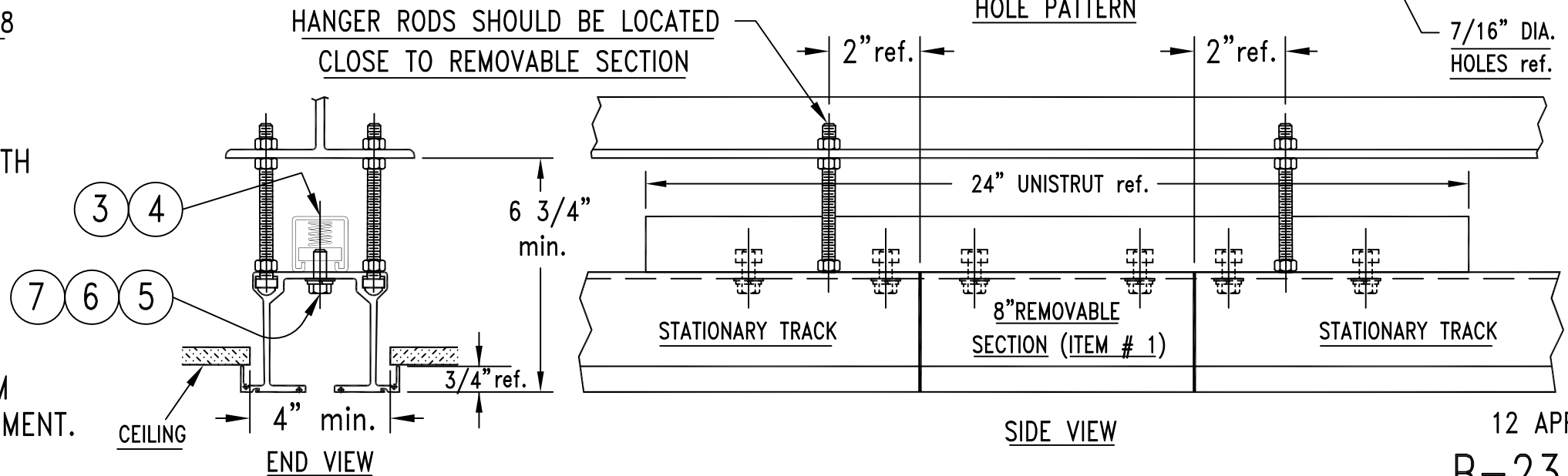
NOTE:
 IF TRACK IS INSTALLED IN A "HARD" CEILING (GYPSBOARD or PLASTER), DO NOT INSTALL OUTBOARD PINS.



HANGER RODS SHOULD BE LOCATED CLOSE TO REMOVABLE SECTION

SEQUENCE OF ASSEMBLY:

- INSTALL SPLICE PINS (item # 8) COMPLETELY INTO BOTH ENDS OF STATIONARY TRACK PIECES.
- BOLT UNISTRUT CHANNEL & NUTS (item # 3 & 4) ON TOP OF BOTH STATIONARY TRACK PIECES.
- BOLT 8" REMOVABLE TRACK LIGHTLY IN PLACE.
- ALIGN TRACK AND MOVE SPLICE PINS (item # 8) FROM STATIONARY TRACK INTO 8" PIECE TO COMPLETE ALIGNMENT.
- TIGHTEN ALL HEX HEAD BOLTS.

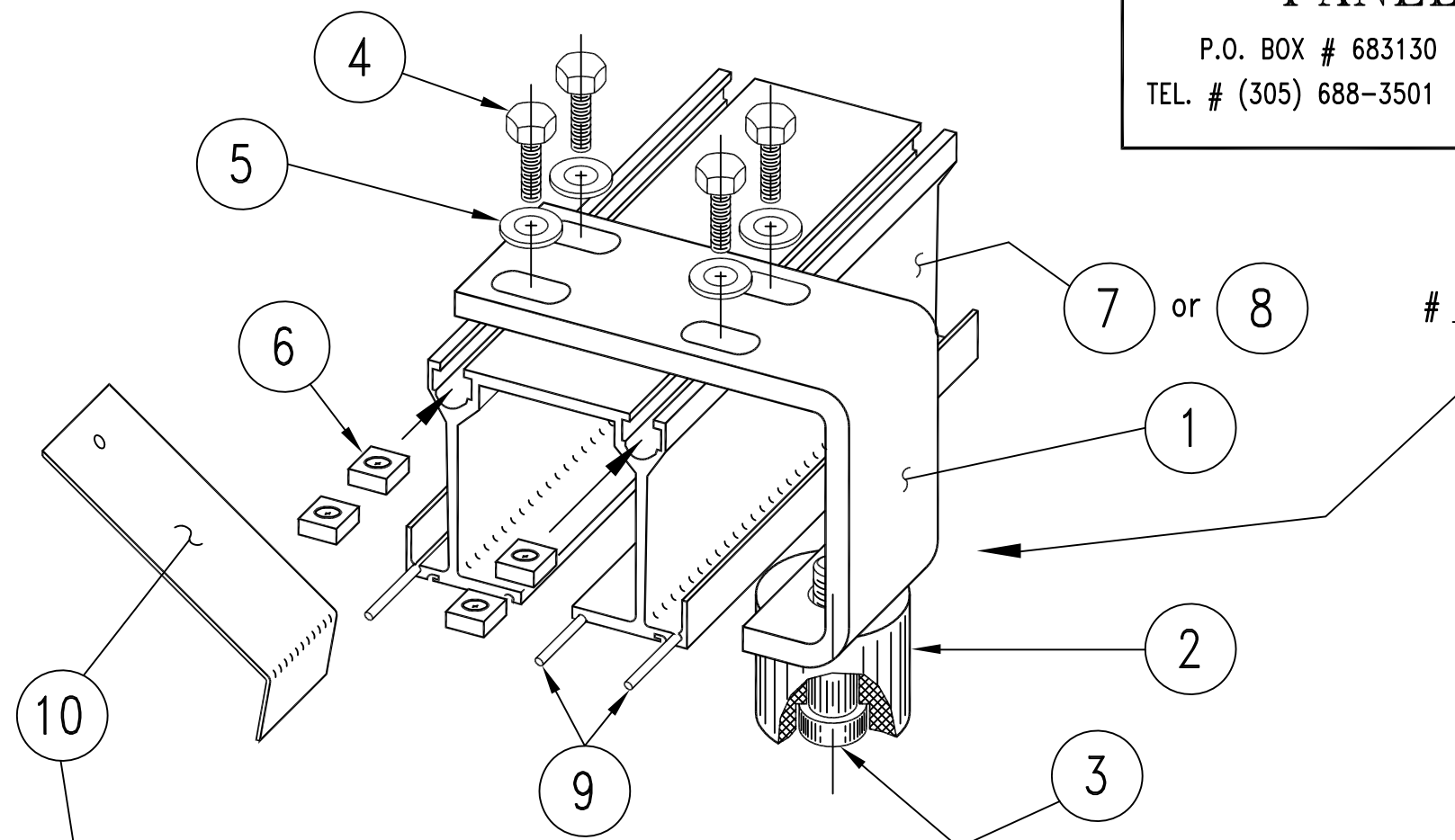


PANELFOLD

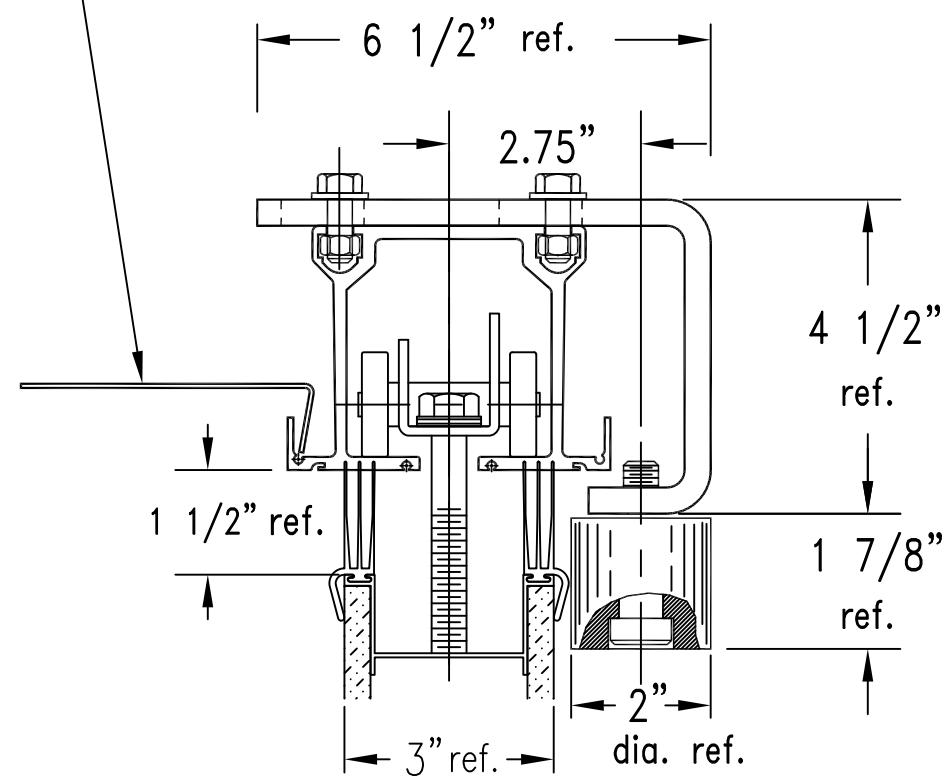
P.O. BOX # 683130 MIAMI, FL. 33168
 TEL. # (305) 688-3501 FAX # (305) 688-0185

ADJUSTABLE GUIDE ROLLER ASS'Y

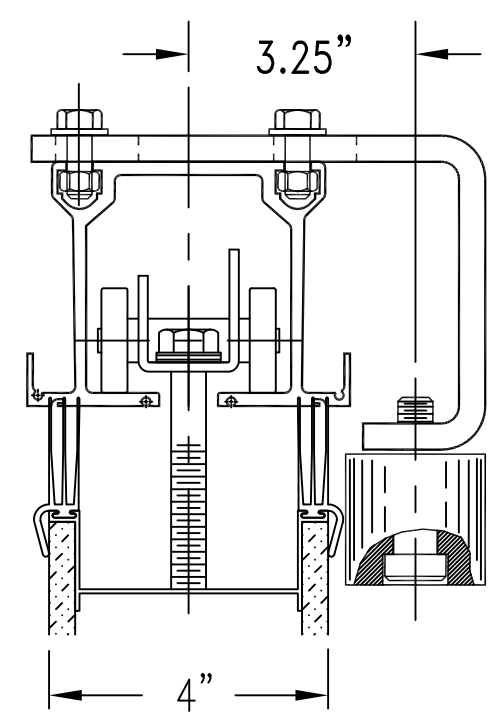
FOR TRACK TYPE 7 & 8
 3" & 4" THICK PANELS



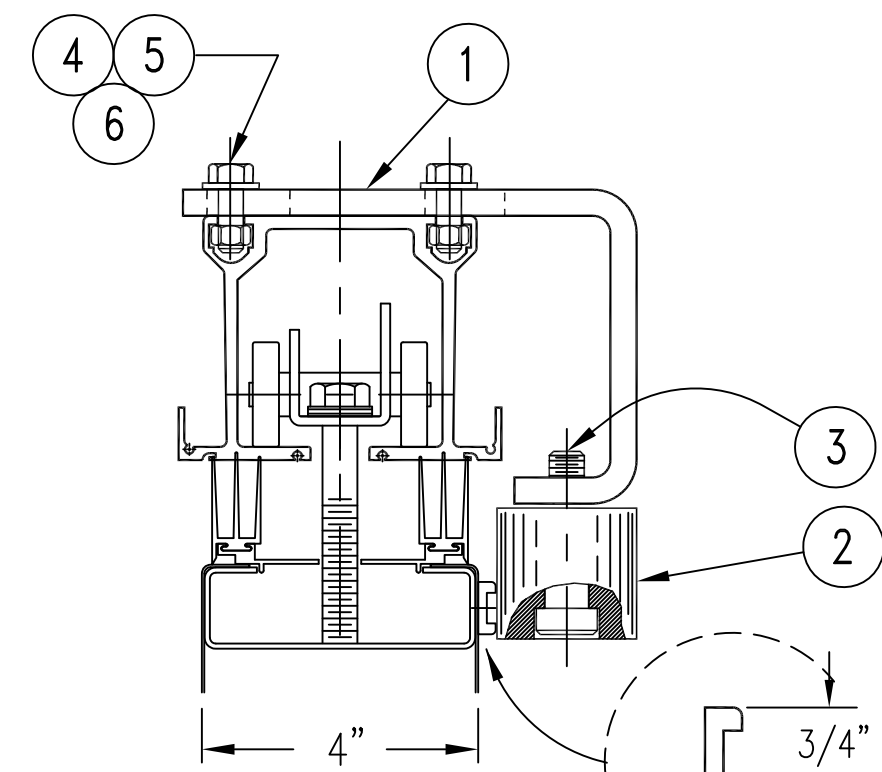
ITEM	PART #	DESCRIPTION	QTY.
1	23313	3/8" STEEL BRACKET	1
2	23314	2" DIA. NYLON ROLLER	1
3	14114	SOC. HD. SHLD. SCREW 5/8" DIA. x 1 1/2"	1
4	K-178	HEX HD. SCREW 3/8"-16 x 1"	4
5	5007	3/8" FLAT WASHER	4
6	4830	3/8"-16 SQUARE NUT	4
7	3371	TRACK TYPE 7	—
8	3365	TRACK TYPE 8	—
9	5622	STEEL SPLICE PINS 1/8" dia. x 7"	—
10	23315	SPLICE PIN INSTALLATION TOOL	1



400 SERIES
 3" ALUMINUM



600 SERIES
 4" ALUMINUM



800 SERIES
 4" STEEL

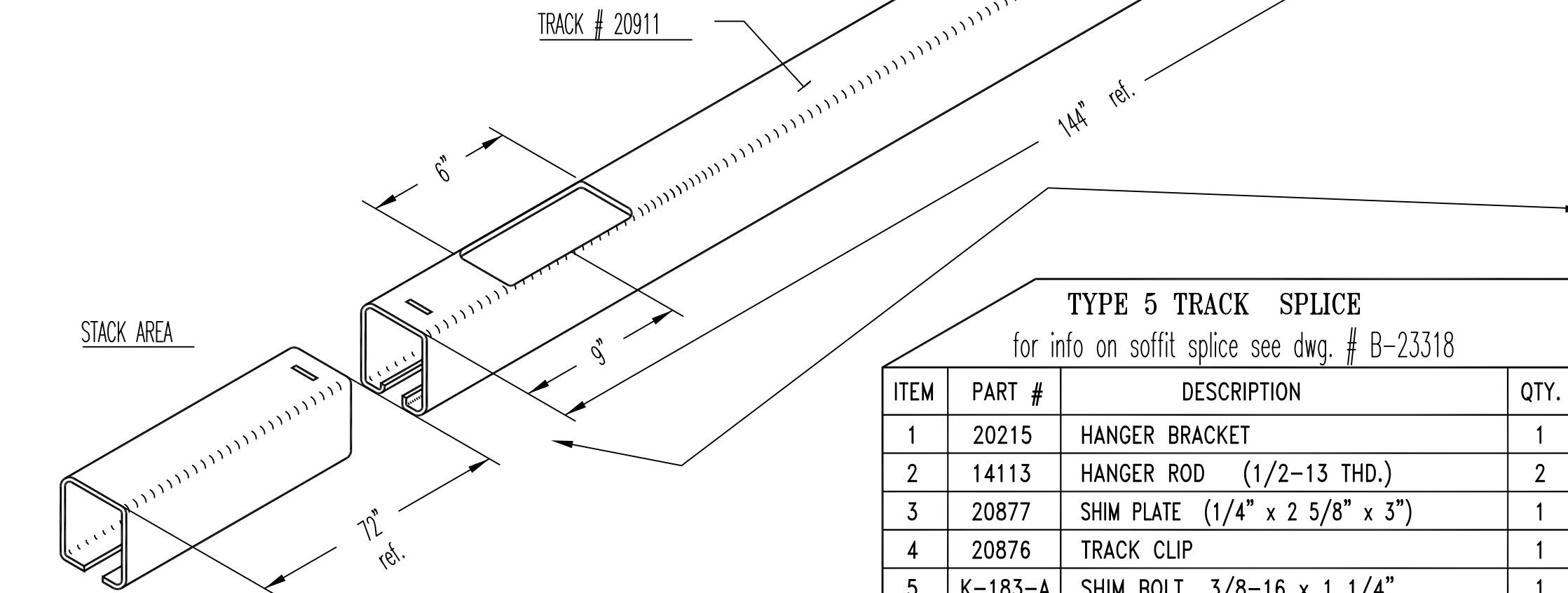
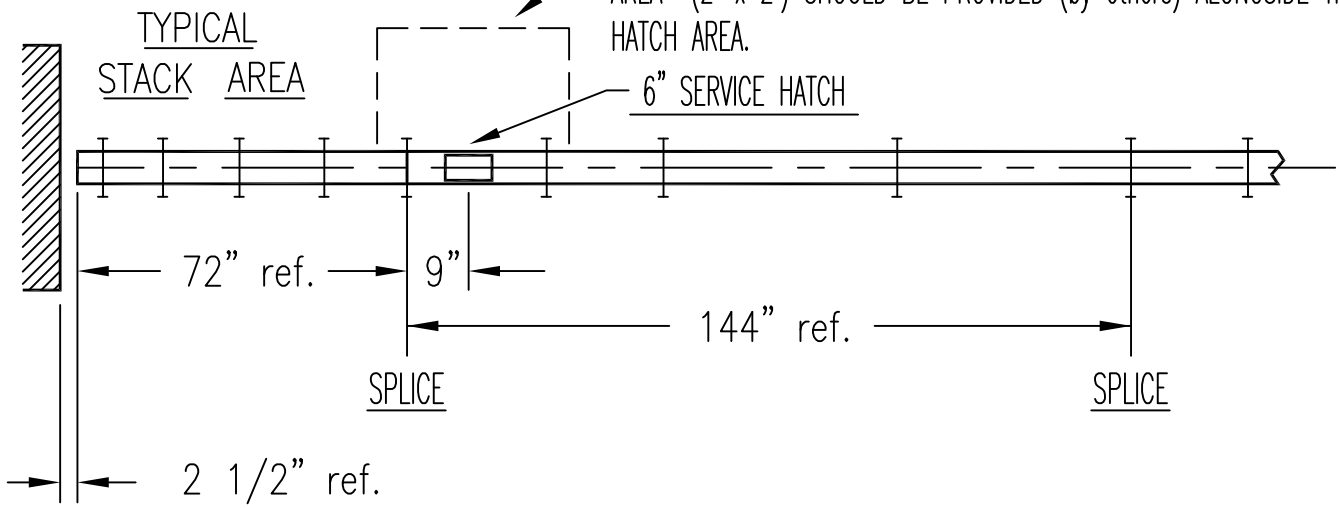
NYLON RUB STRIP
 (series 800 only)
 (part # 20898)

PANELFOLD

P.O. BOX # 683130 MIAMI, FL. 33168
 TEL. # (305) 688-3501 FAX # (305) 688-0185

DWG. # B-23363 8 SEPT '97

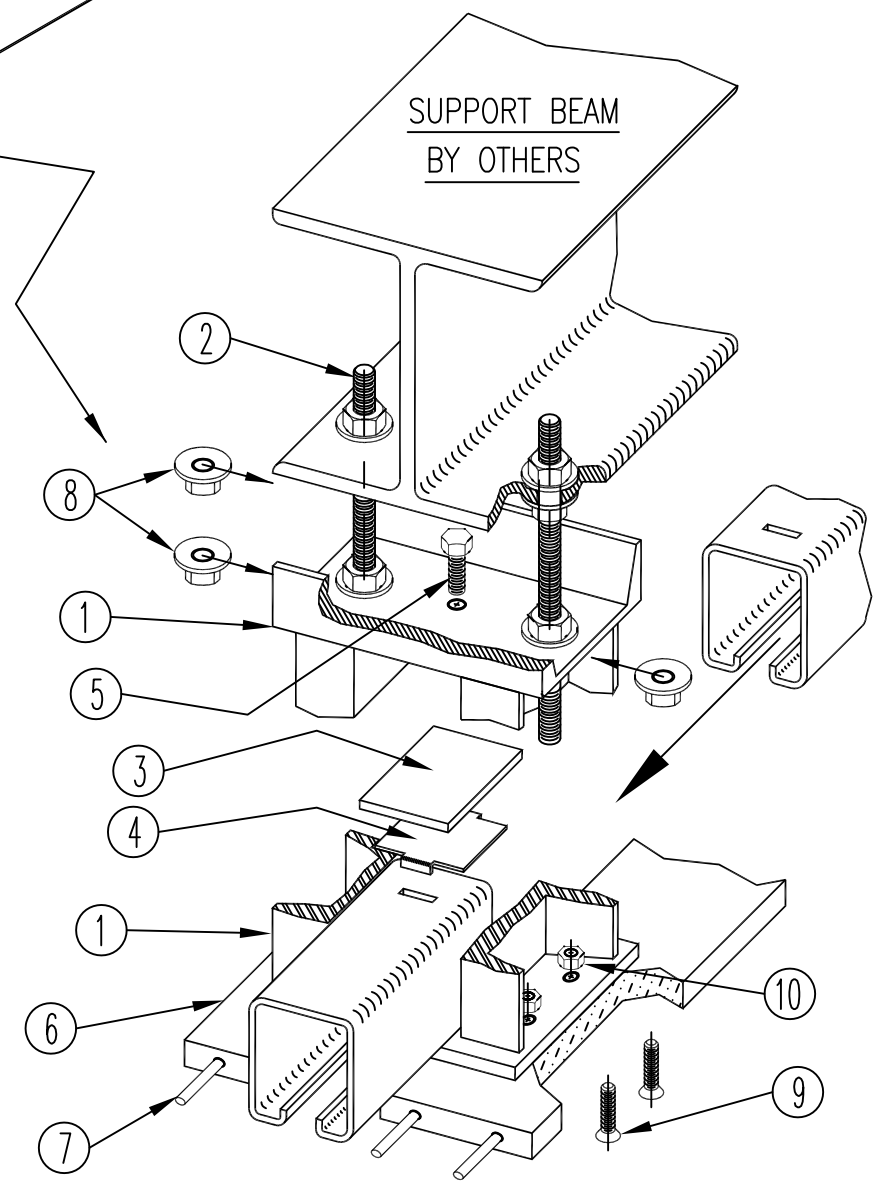
IF TRACK IS INSTALLED IN A "HARD" CEILING (GYPSUM or PLASTER), AN ACCESS AREA (2' x 2') SHOULD BE PROVIDED (by others) ALONGSIDE THE TOP SERVICE HATCH AREA.



TYPE 5 TRACK SPLICE

for info on soffit splice see dwg. # B-23318

ITEM	PART #	DESCRIPTION	QTY.
1	20215	HANGER BRACKET	1
2	14113	HANGER ROD (1/2-13 THD.)	2
3	20877	SHIM PLATE (1/4" x 2 5/8" x 3")	1
4	20876	TRACK CLIP	1
5	K-183-A	SHIM BOLT 3/8-16 x 1 1/4"	1
6	20273	SOFFIT, WOOD, PRIMED (95")	2
7	M-652	WOOD SOFFIT DOWEL 1/4" dia. x 2 1/2"	4
8	11637	FLANGE NUT 1/2-13 THD.	8
9	14109	SOFFIT SCREWS 1/4-20 x 1 1/2" FL. HD.	4
10	5205	HEX NUT 1/4-20 THD.	4
11	20911	TYPE 5 TRACK (144")	1



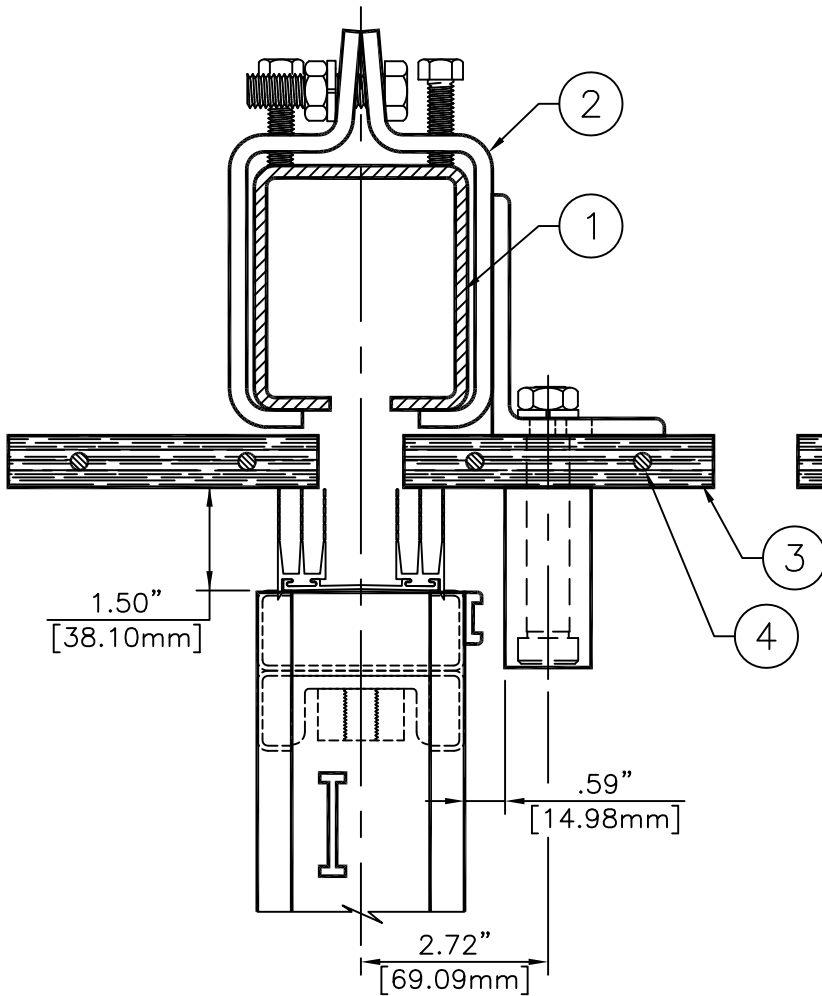
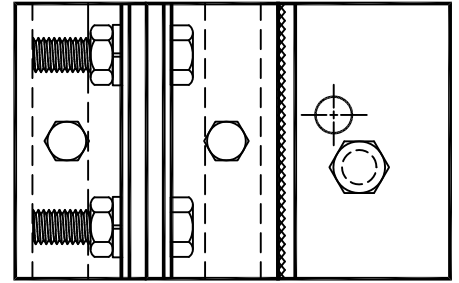
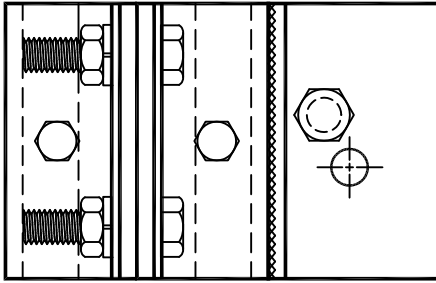
TRACK TYPE 5 SPLICE
 STANDARD SOFFIT
 CENTER STACKING PANELS

CONFIDENTIAL: this drawing and its technical contents are the confidential and exclusive property of PANELFOLD INC. MIAMI, FL. U.S.A. and its reproduction or disclosure of its contents without the express written permission of Panelfold Inc. is strictly prohibited.

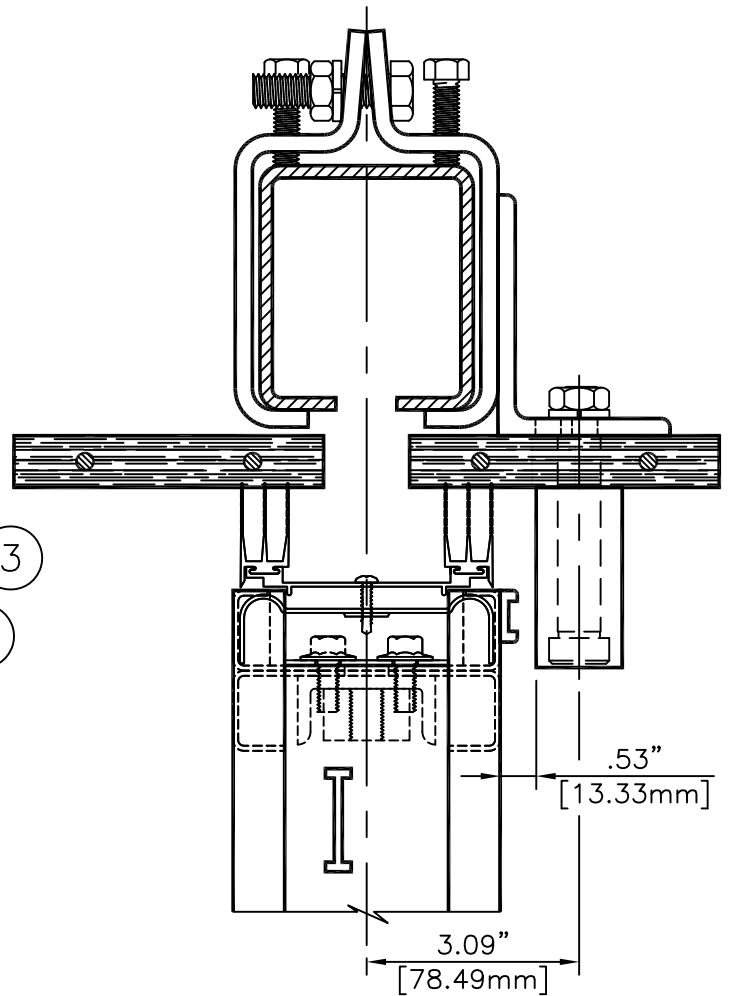
8 SEPT '97

B-23363

ITEM	PART NO.	DESCRIPTION	QTY.
1	31707	STEEL TRACK, TYPE 5	1
2	21131	TYPE 5 GUIDE ROLLER ASSY	1
3	20273	STRAIGHT SOFFIT, 4-7/16" X 95"	2
4	M-652	WOOD SOFFIT DOWEL $\phi 1/4"$ X 2-1/2"	4



3" PANEL

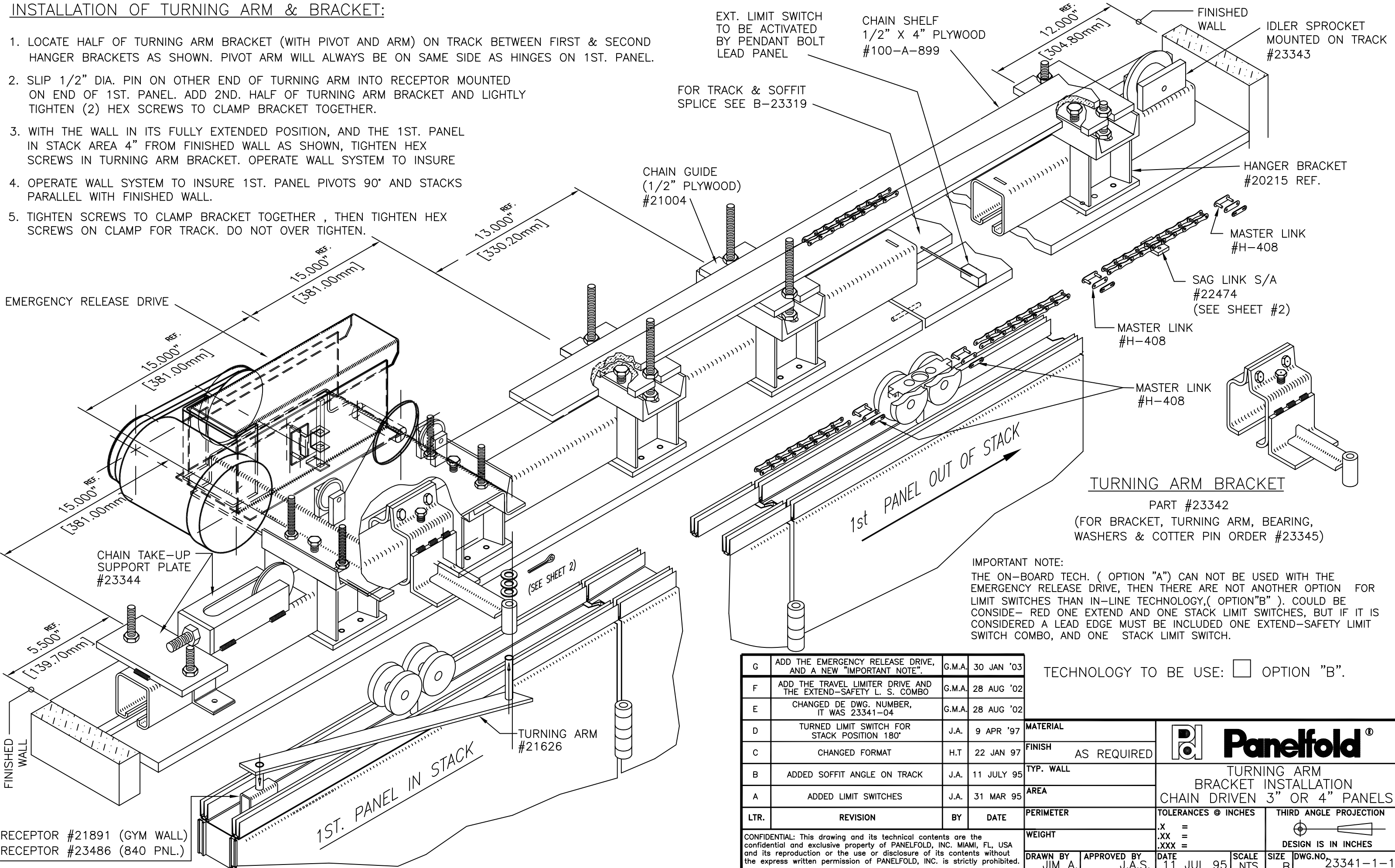


4" PANEL

				MATERIAL	NOTED		
				FINISH			
				TYP. WALL			
A	REDRAWN FROM 23317	H.T	19 NOV 97	AREA	DET, TRACK TYPE 5 GUIDE ROLLER MOUNTING		
LTR.	REVISION	BY	DATE	PERIMETER	TOLERANCES @ INCHES	THIRD ANGLE PROJECTION	
				WEIGHT	.X =		
				DRAWN BY	JIM A.	APPROVED BY	G.E.D. III
				DATE	28 NOV 95	SCALE	1:3
				SIZE	A	DWG.NO.	23317
CONFIDENTIAL: This drawing and its technical contents are the confidential and exclusive property of PANEFOLD, INC. MIAMI, FL, USA and its reproduction or the use or disclosure of its contents without the express written permission of PANEFOLD, INC. is strictly prohibited.							

INSTALLATION OF TURNING ARM & BRACKET:

1. LOCATE HALF OF TURNING ARM BRACKET (WITH PIVOT AND ARM) ON TRACK BETWEEN FIRST & SECOND HANGER BRACKETS AS SHOWN. PIVOT ARM WILL ALWAYS BE ON SAME SIDE AS HINGES ON 1ST. PANEL.
2. SLIP 1/2" DIA. PIN ON OTHER END OF TURNING ARM INTO RECEPTOR MOUNTED ON END OF 1ST. PANEL. ADD 2ND. HALF OF TURNING ARM BRACKET AND LIGHTLY TIGHTEN (2) HEX SCREWS TO CLAMP BRACKET TOGETHER.
3. WITH THE WALL IN ITS FULLY EXTENDED POSITION, AND THE 1ST. PANEL IN STACK AREA 4" FROM FINISHED WALL AS SHOWN, TIGHTEN HEX SCREWS IN TURNING ARM BRACKET. OPERATE WALL SYSTEM TO INSURE
4. OPERATE WALL SYSTEM TO INSURE 1ST. PANEL PIVOTS 90° AND STACKS PARALLEL WITH FINISHED WALL.
5. TIGHTEN SCREWS TO CLAMP BRACKET TOGETHER, THEN TIGHTEN HEX SCREWS ON CLAMP FOR TRACK. DO NOT OVER TIGHTEN.



IMPORTANT NOTE:
 THE ON-BOARD TECH. (OPTION "A") CAN NOT BE USED WITH THE EMERGENCY RELEASE DRIVE, THEN THERE ARE NOT ANOTHER OPTION FOR LIMIT SWITCHES THAN IN-LINE TECHNOLOGY,(OPTION" B"). COULD BE CONSIDER- RED ONE EXTEND AND ONE STACK LIMIT SWITCHES, BUT IF IT IS CONSIDERED A LEAD EDGE MUST BE INCLUDED ONE EXTEND-SAFETY LIMIT SWITCH COMBO, AND ONE STACK LIMIT SWITCH.

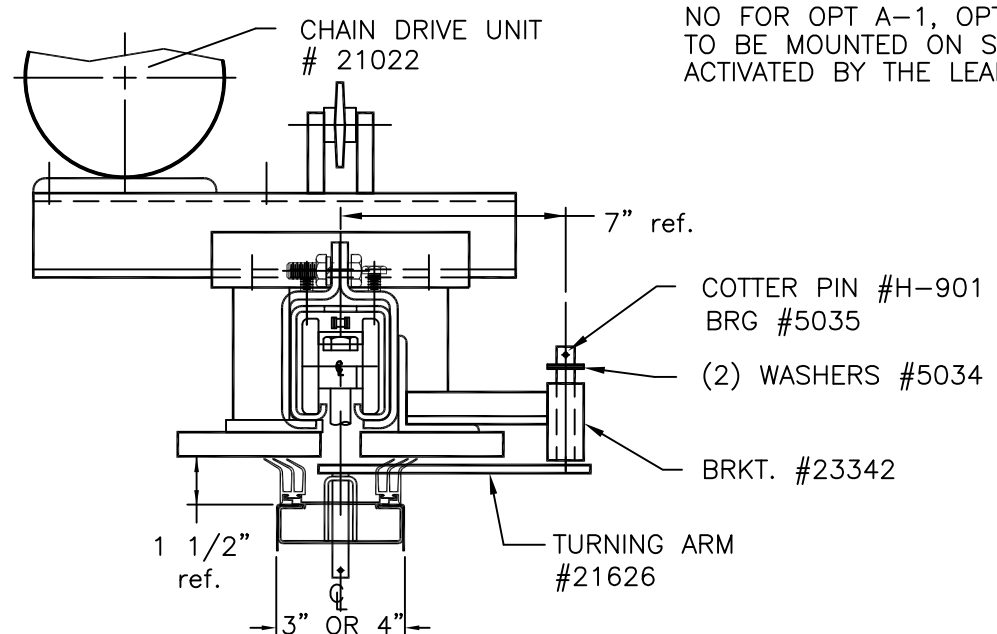
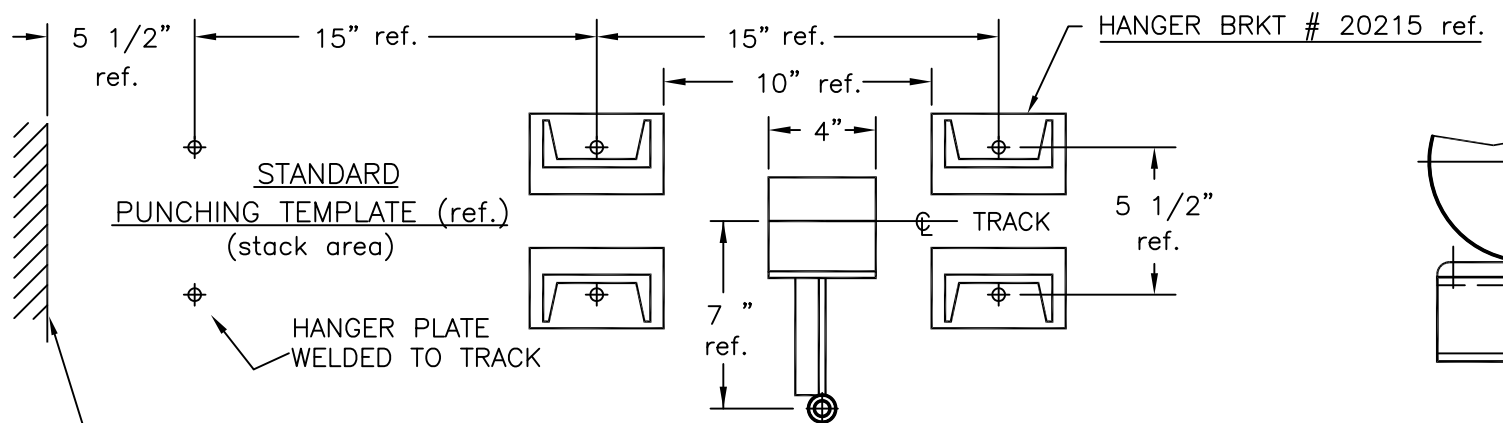
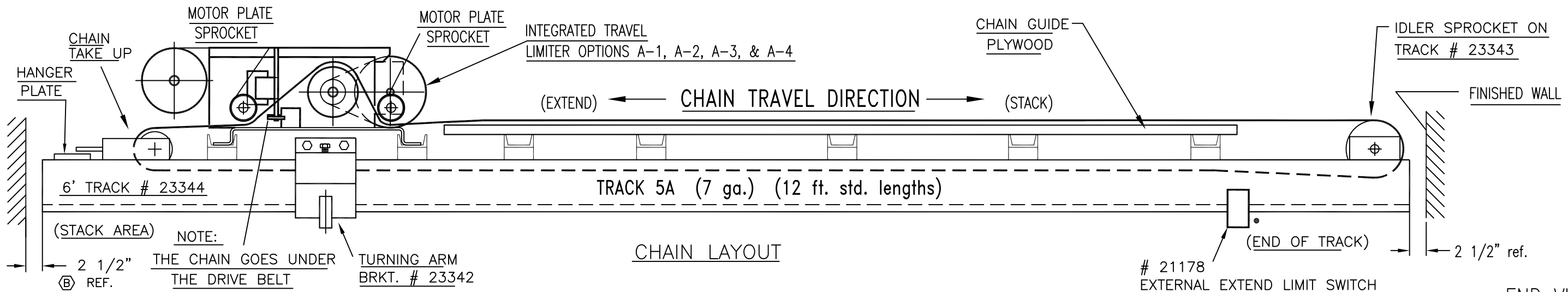
TECHNOLOGY TO BE USE: OPTION "B".

G	ADD THE EMERGENCY RELEASE DRIVE, AND A NEW "IMPORTANT NOTE".	G.M.A.	30 JAN '03
F	ADD THE TRAVEL LIMITER DRIVE AND THE EXTEND-SAFETY L. S. COMBO	G.M.A.	28 AUG '02
E	CHANGED DE DWG. NUMBER, IT WAS 23341-04	G.M.A.	28 AUG '02
D	TURNED LIMIT SWITCH FOR STACK POSITION 180°	J.A.	9 APR '97
C	CHANGED FORMAT	H.T	22 JAN 97
B	ADDED SOFFIT ANGLE ON TRACK	J.A.	11 JULY 95
A	ADDED LIMIT SWITCHES	J.A.	31 MAR 95
LTR.	REVISION	BY	DATE

CONFIDENTIAL: This drawing and its technical contents are the confidential and exclusive property of PANELFOLD, INC. MIAMI, FL, USA and its reproduction or the use or disclosure of its contents without the express written permission of PANELFOLD, INC. is strictly prohibited.

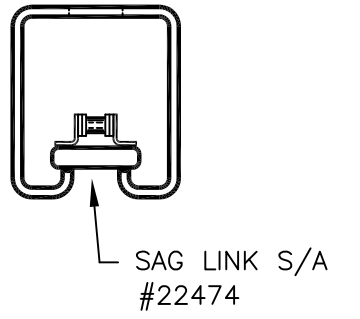
MATERIAL		TURNING ARM BRACKET INSTALLATION CHAIN DRIVEN 3" OR 4" PANELS	
FINISH		AS REQUIRED	
TYP. WALL		AREA	
PERIMETER	TOLERANCES @ INCHES	THIRD ANGLE PROJECTION	
WEIGHT	.X =		
DRAWN BY	APPROVED BY	DATE	SCALE
JIM A.	J.A.S.	11 JUL 95	NTS
SIZE	DWG.NO.	23341-1-1	
B			

RECEPTOR #21891 (GYM WALL)
 RECEPTOR #23486 (840 PNL.)



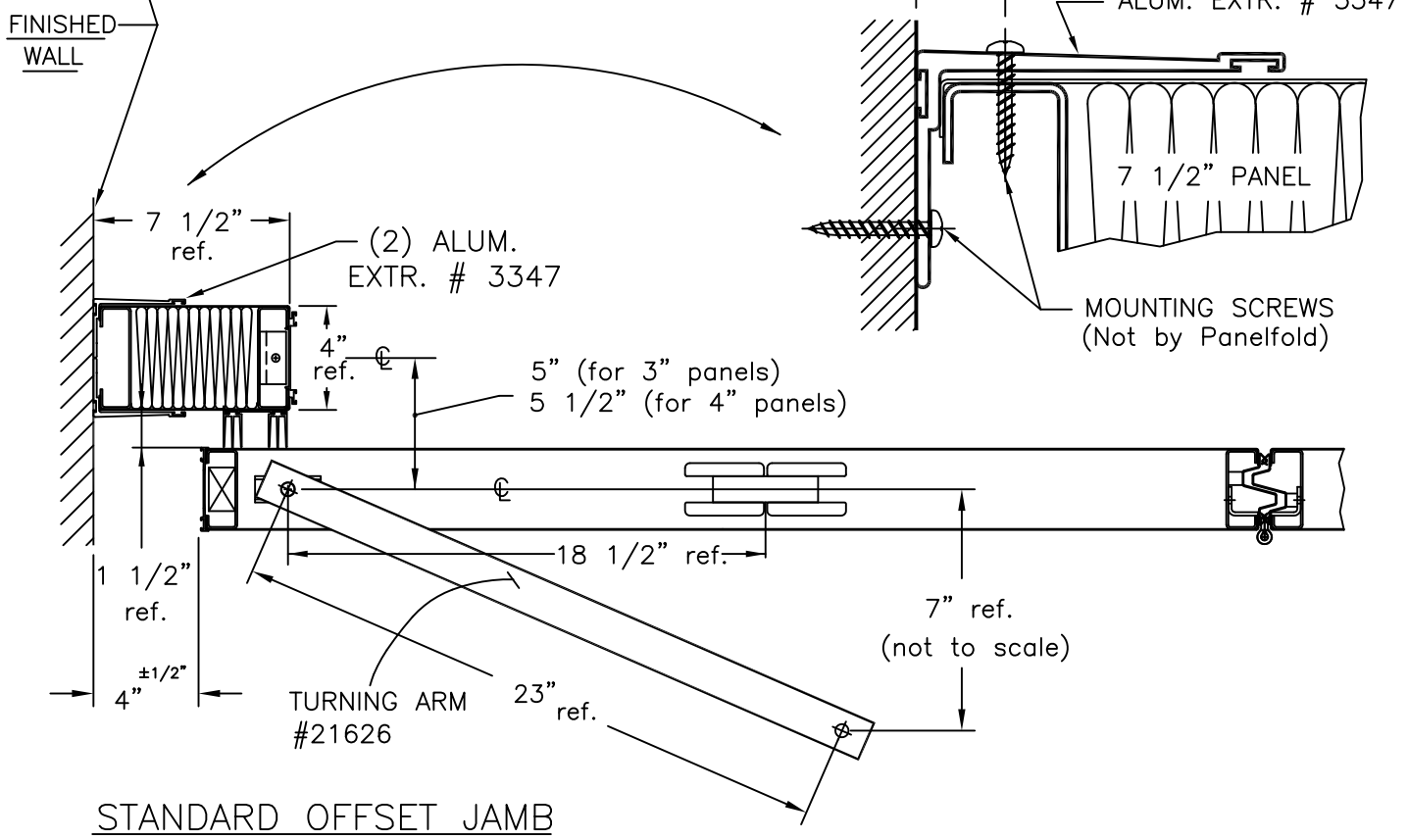
21178
 EXTERNAL EXTEND LIMIT SWITCH FOR OPTION A-3 & OPTION A-4
 NO FOR OPTION A-1 & OPTION A-2
 OR # 32159 (COMBO)
 EXTERNAL EXTEND & SAFETY LIMIT SW. FOR OPTION A-3
 NO FOR OPT A-1, OPT A-2, & A-4.
 TO BE MOUNTED ON SOFFIT, AND TO BE ACTIVATED BY THE LEAD PENDAL BOLD.

END VIEW



FURNISHED FOR WALLS OVER 40' ONLY

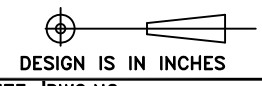
THE SAG LINK(S) PREVENTS THE CHAIN THAT IS BEFORE THE FIRST TROLLEY FROM HANGING DOWN BELOW THE TRACK. THE SAG LINK(S) WILL TRAVEL PAST THE IDLER SPROCKET AT THE END OF THE TRACK, BUT WILL NOT TRAVEL THRU THE MOTOR PLATE SPROCKETS.



D	ADD THE TRAVEL LIMITER DRIVE, THE L. S. COMBO, & THE "IMPORTANT NOTE"	G.M.A.	28 AUG '02	MATERIAL	NOTED
C	ADD WALL MOUNTING VIEW 7 1/2" PANEL	J.A.	20 FEB 98	FINISH	AS REQUIRED
B	MOVED SPROCKET TO END OF TRACK 2 1/2" was 5.500	J.A.	19 JUNE 97	TYP. WALL	
A	CHANGED FORMAT	H.T.	22 JAN 97	AREA	
LTR.	REVISION	BY	DATE	PERIMETER	TOLERANCES @ INCHES
CONFIDENTIAL: This drawing and its technical contents are the confidential and exclusive property of PANELFOLD, INC. MIAMI, FL, USA and its reproduction or the use or disclosure of its contents without the express written permission of PANELFOLD, INC. is strictly prohibited.				WEIGHT	THIRD ANGLE PROJECTION
DRAWN BY JIM A.		APPROVED BY J.A.S.		DATE 17 DEC 96	SCALE 1:1.75
				SIZE B	DWG.NO. 23341-2-4



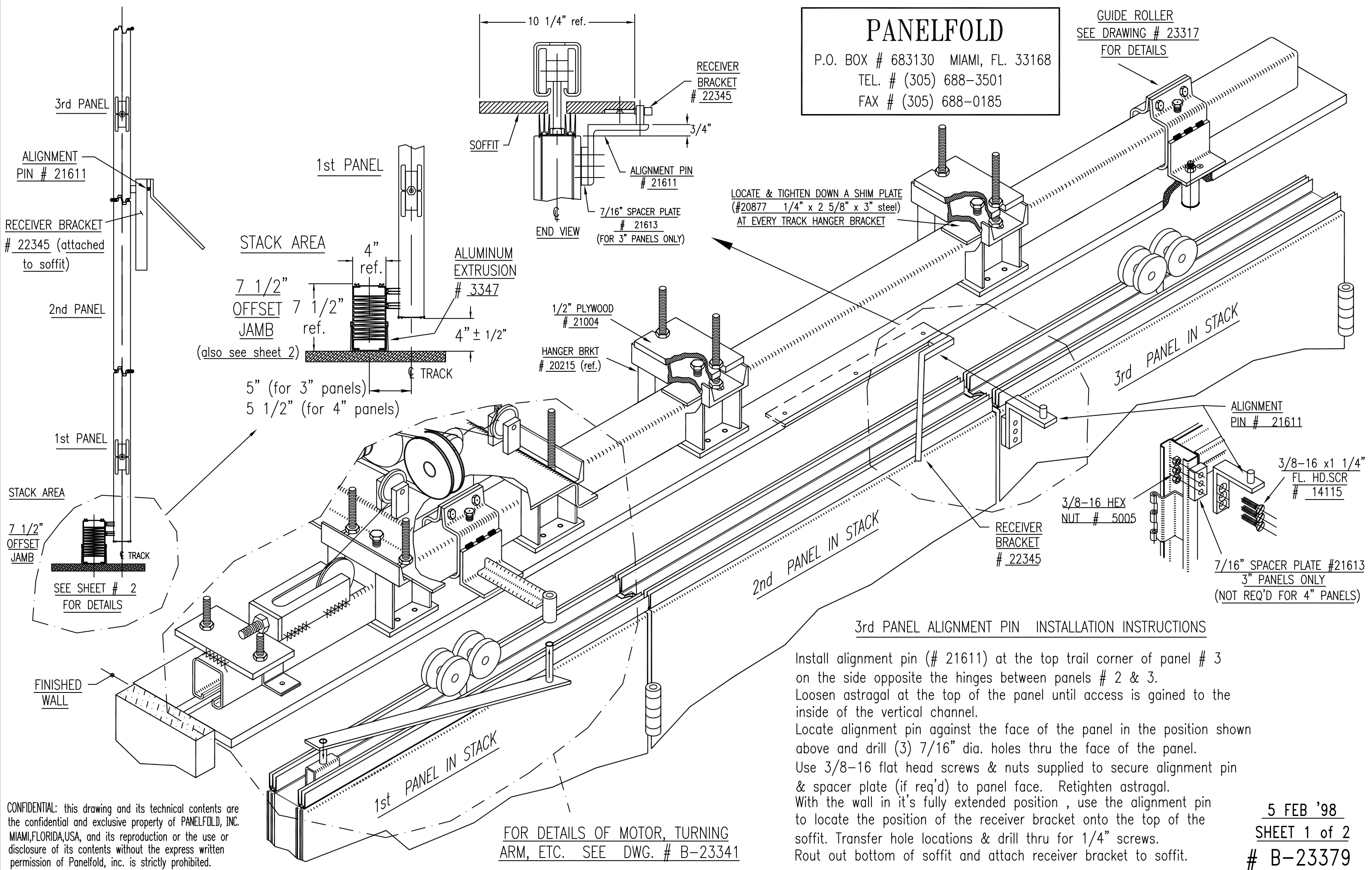
PIVOT ARM BRACKET INSTALLATION CHAIN DRIVEN 3" OR 4" PANELS



PANELFOLD

P.O. BOX # 683130 MIAMI, FL. 33168
 TEL. # (305) 688-3501
 FAX # (305) 688-0185

GUIDE ROLLER
 SEE DRAWING # 23317
 FOR DETAILS



3rd PANEL ALIGNMENT PIN INSTALLATION INSTRUCTIONS

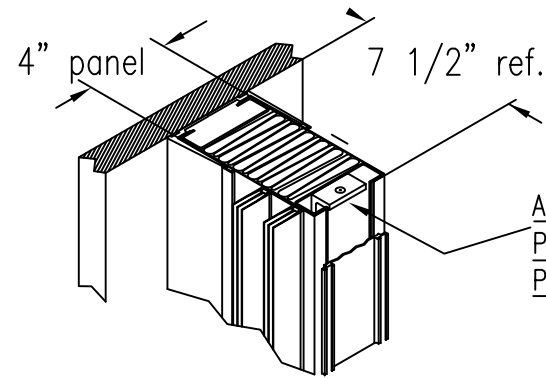
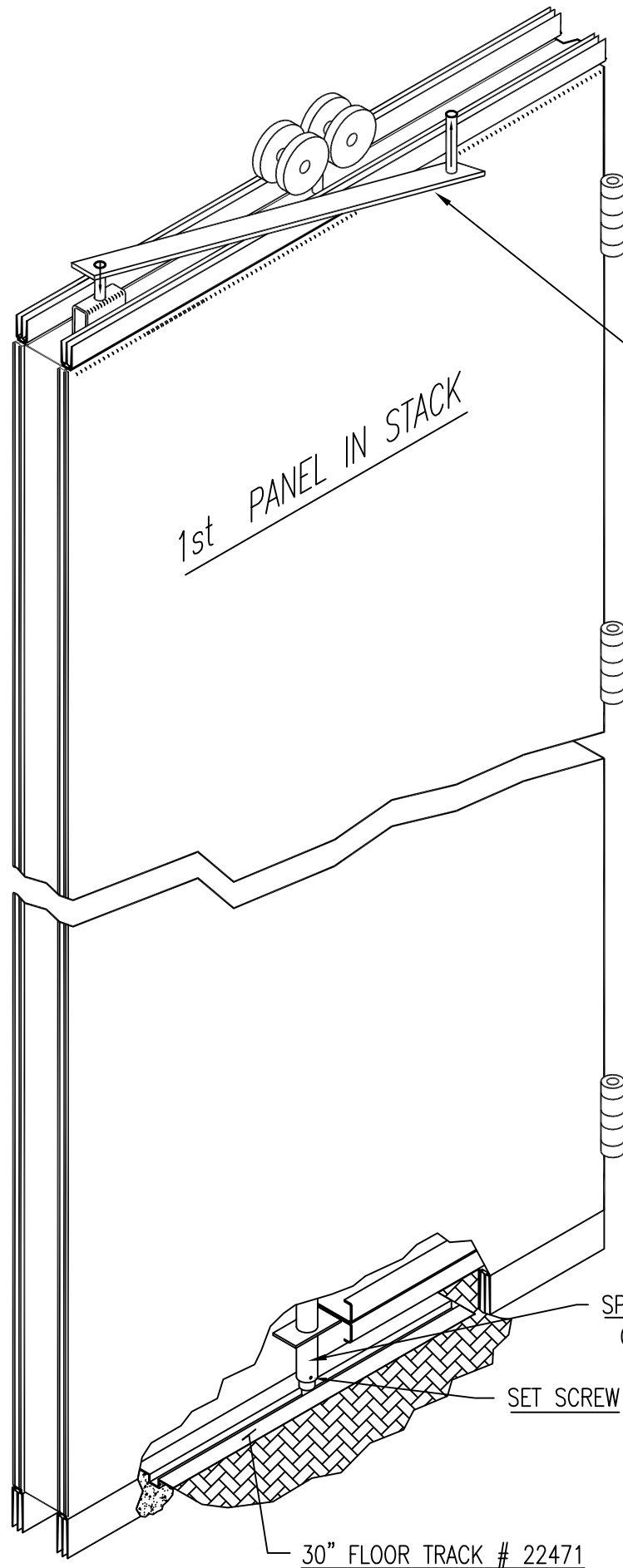
Install alignment pin (# 21611) at the top trail corner of panel # 3 on the side opposite the hinges between panels # 2 & 3. Loosen astragal at the top of the panel until access is gained to the inside of the vertical channel. Locate alignment pin against the face of the panel in the position shown above and drill (3) 7/16" dia. holes thru the face of the panel. Use 3/8-16 flat head screws & nuts supplied to secure alignment pin & spacer plate (if req'd) to panel face. Retighten astragal. With the wall in it's fully extended position, use the alignment pin to locate the position of the receiver bracket onto the top of the soffit. Transfer hole locations & drill thru for 1/4" screws. Rout out bottom of soffit and attach receiver bracket to soffit.

FOR DETAILS OF MOTOR, TURNING ARM, ETC. SEE DWG. # B-23341

CONFIDENTIAL: this drawing and its technical contents are the confidential and exclusive property of PANELFOLD, INC. MIAMI,FLORIDA,USA, and its reproduction or the use or disclosure of its contents without the express written permission of Panelfold, inc. is strictly prohibited.

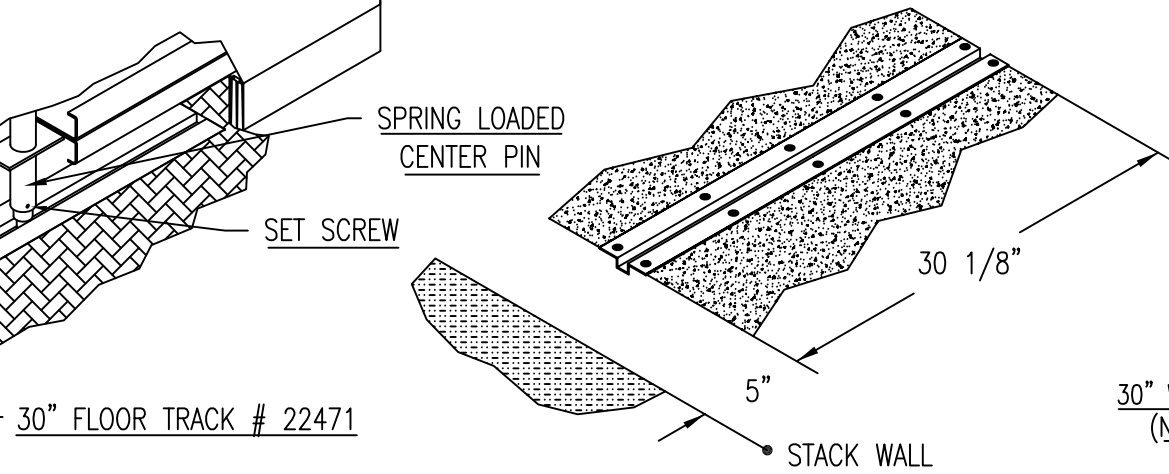
PANELFOLD

P.O. BOX # 683130 MIAMI, FL. 33168
 TEL. # (305) 688-3501 FAX # (305) 688-0185



A MOUNTING ANGLE HAS BEEN WELDED INSIDE PANEL CHANNEL (TOP & BOTTOM) TO SECURE PANEL TO CEILING & FLOOR.

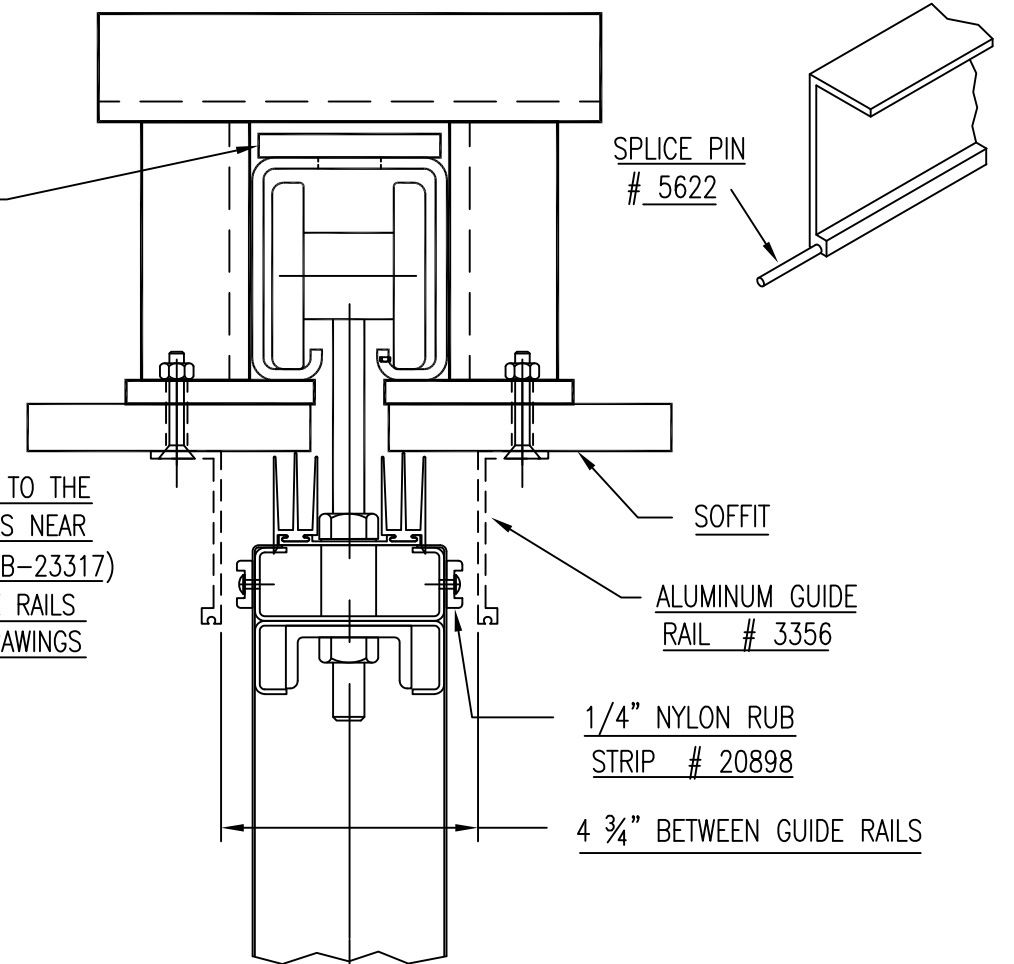
7 1/2" OFFSET JAMB
 (shown on sheet # 1)



ALUMINUM GUIDE RAILS ARE ATTACHED TO THE SOFFIT ON BOTH SIDES OF THE PANELS NEAR THE GUIDE ROLLERS. (SEE DRAWING # B-23317) LOCATION OF GUIDE ROLLERS & GUIDE RAILS WILL BE SHOWN ON TRACK LAYOUT DRAWINGS

SHIM PLATE # 20877

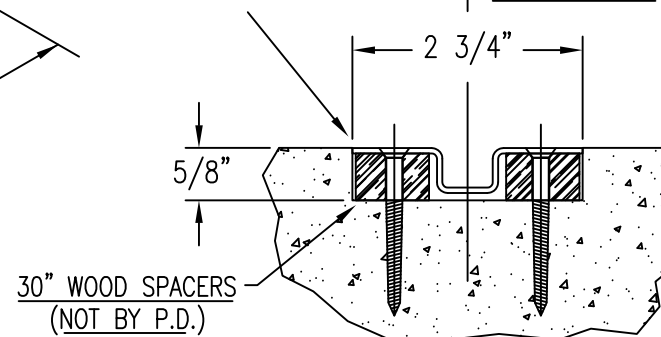
SPLICE PIN # 5622



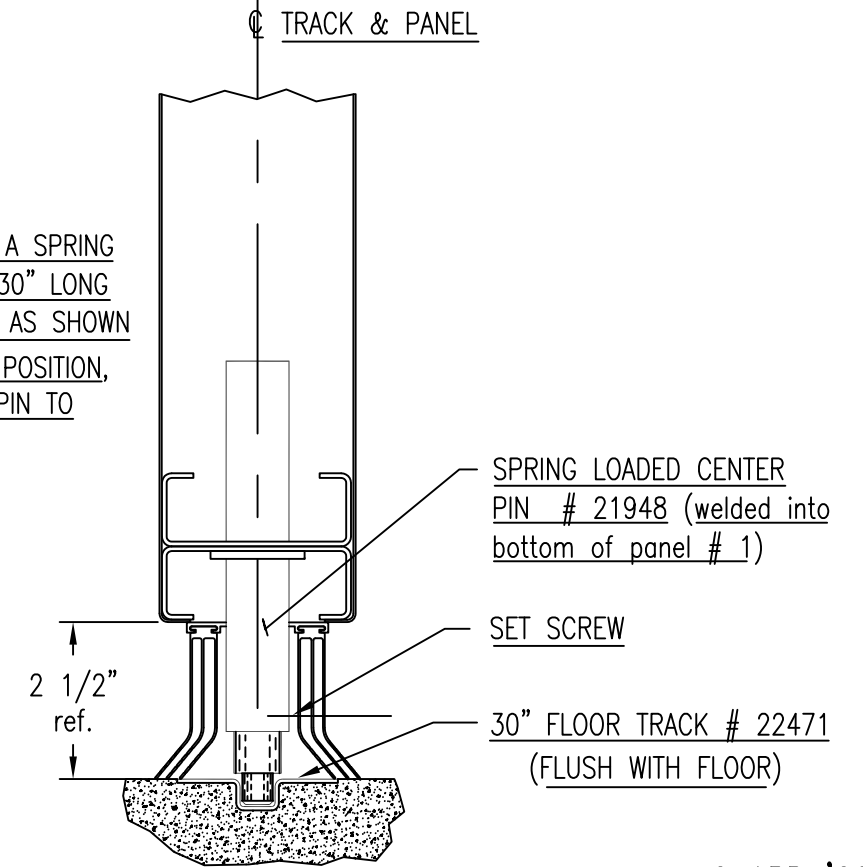
IN THE BOTTOM OF THE FIRST PANEL IS A SPRING LOADED CENTER PIN WHICH RIDES IN A 30" LONG STEEL "TRACK" INSTALLED IN THE FLOOR AS SHOWN WITH THE WALL IN ITS FULLY EXTENDED POSITION, LOOSEN SET SCREW TO ALLOW CENTER PIN TO ENGAGE TRACK

TRACK FLUSH OR SLIGHTLY BELOW FLOOR

CEILING & FLOOR TRACK



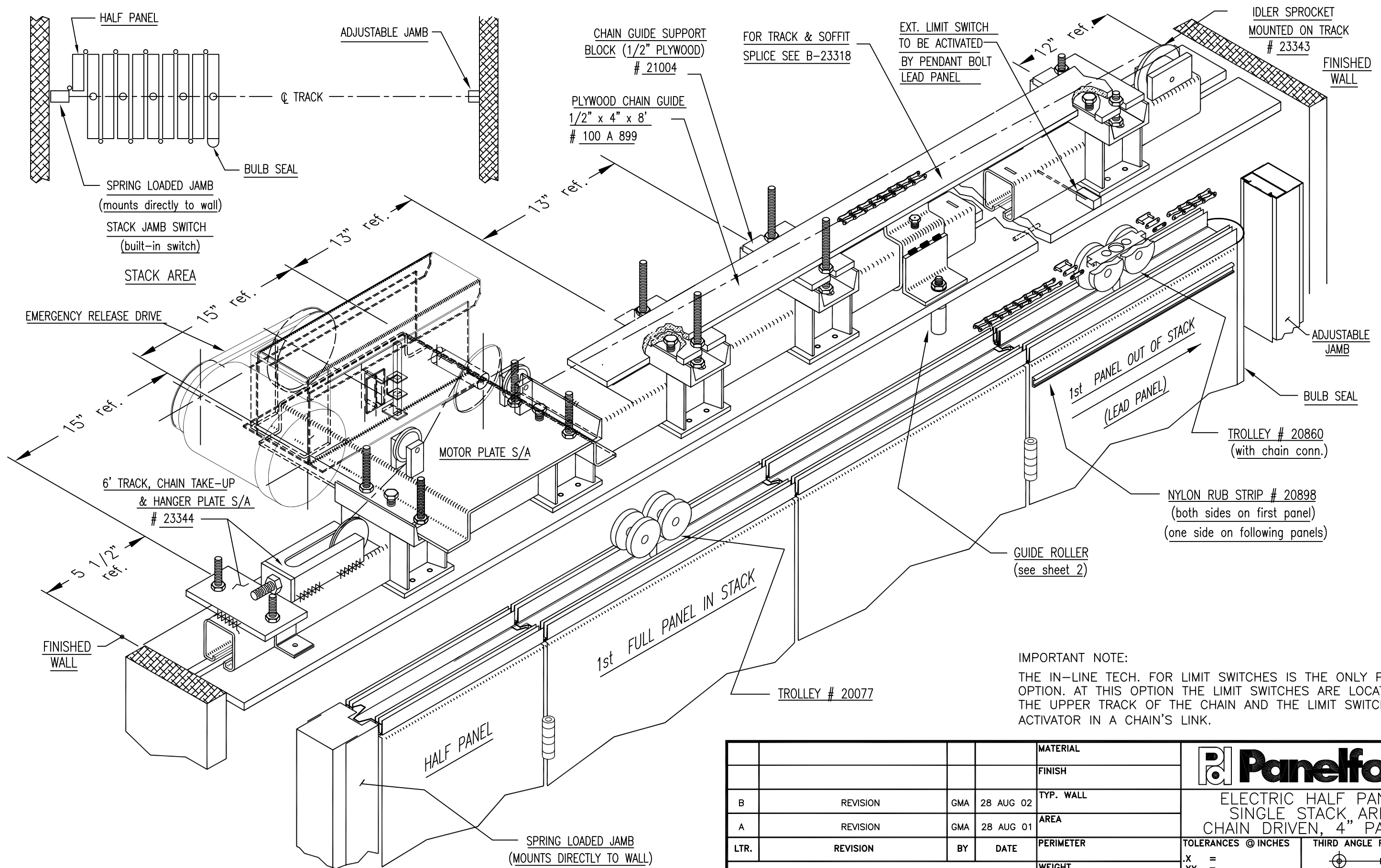
5/8" x 2 3/4" x 30 1/8" FLOOR OPENING FOR TRACK



END VIEW

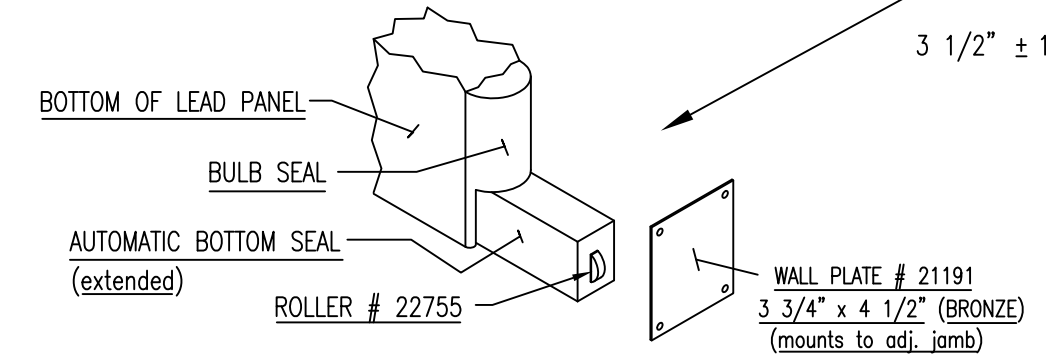
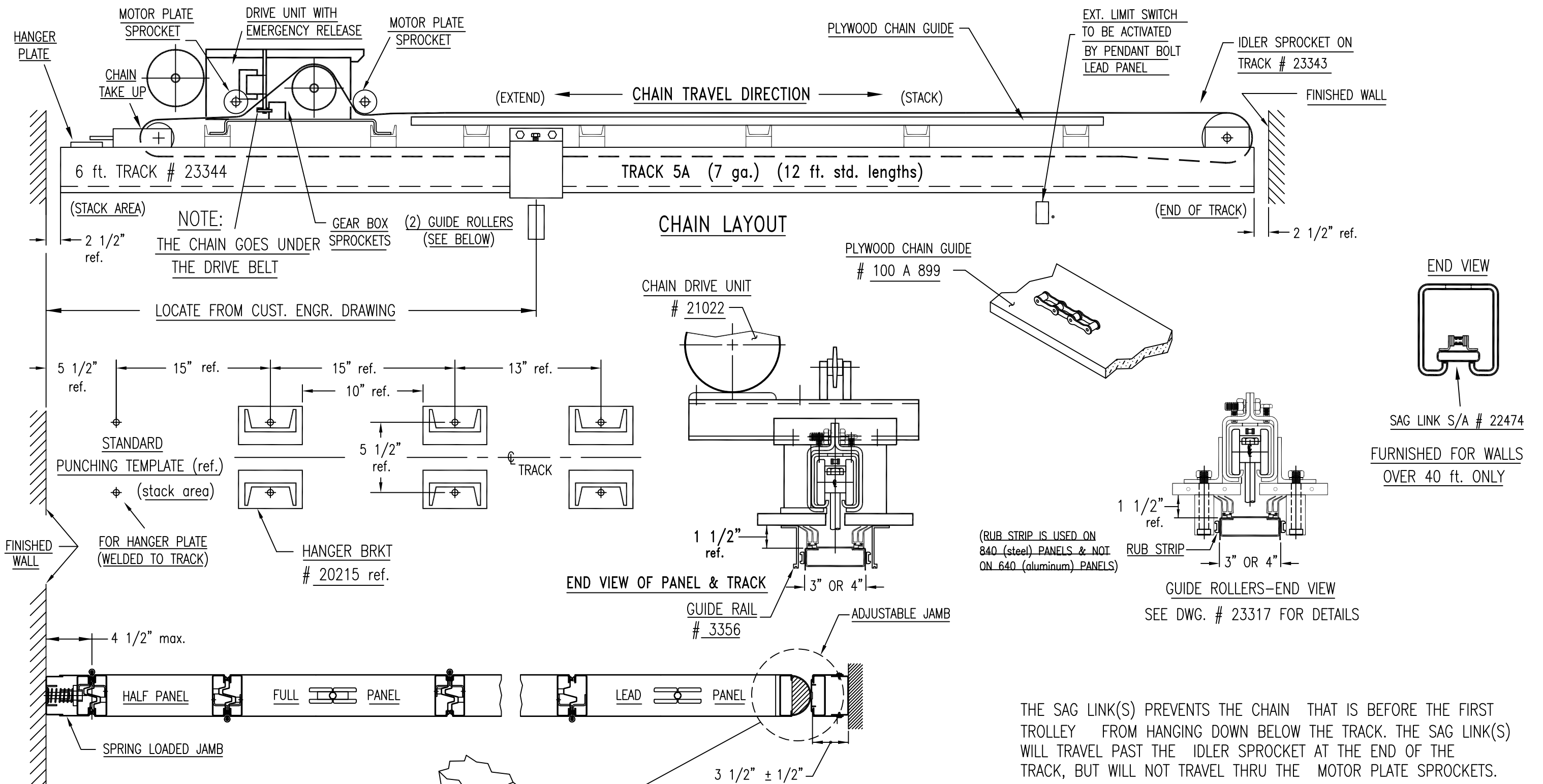
6 APR '00
 SHEET 2 of 2

B-23379



IMPORTANT NOTE:
 THE IN-LINE TECH. FOR LIMIT SWITCHES IS THE ONLY POSSIBLE OPTION. AT THIS OPTION THE LIMIT SWITCHES ARE LOCATED ON THE UPPER TRACK OF THE CHAIN AND THE LIMIT SWITCH ACTIVATOR IN A CHAIN'S LINK.

				MATERIAL			
				FINISH			
B	REVISION	GMA	28 AUG 02	TYP. WALL		ELECTRIC HALF PANEL SINGLE STACK, AREA CHAIN DRIVEN, 4" PANELS	
A	REVISION	GMA	28 AUG 01	AREA			
LTR.	REVISION	BY	DATE	PERIMETER		TOLERANCES @ INCHES	THIRD ANGLE PROJECTION
				WEIGHT		.X =	 DESIGN IS IN INCHES
CONFIDENTIAL: This drawing and its technical contents are the confidential and exclusive property of PANEFOLD, INC. MIAMI, FL, USA and its reproduction or the use or disclosure of its contents without the express written permission of PANEFOLD, INC. is strictly prohibited.				DRAWN BY	APPROVED BY	DATE	
				JIM A.		09 APR 97	NTS
				SIZE	DWG.NO.	B-23459-1-2-3	



THE SAG LINK(S) PREVENTS THE CHAIN THAT IS BEFORE THE FIRST TROLLEY FROM HANGING DOWN BELOW THE TRACK. THE SAG LINK(S) WILL TRAVEL PAST THE IDLER SPROCKET AT THE END OF THE TRACK, BUT WILL NOT TRAVEL THRU THE MOTOR PLATE SPROCKETS.

				MATERIAL		Panelfold [®]	
C	REVISION	J.A.	02 OCT 02	FINISH			
B	REVISION	J.A.	28 AUG 02	TYP. WALL		ELECTRIC HALF PANEL CLOSURE	
A	REVISION	J.A.	17 OCT 01	AREA		SINGLE STACK AREA	
LTR.	REVISION	BY	DATE	PERIMETER		CHAIN DRIVEN, 4" PANELS	
				WEIGHT		TOLERANCES @ INCHES	
				DRAWN BY JIM A.		APPROVED BY	
				DATE 11 JUN 97		SCALE NTS	
				SIZE B		DWG. NO. B-23459-2-2-3	

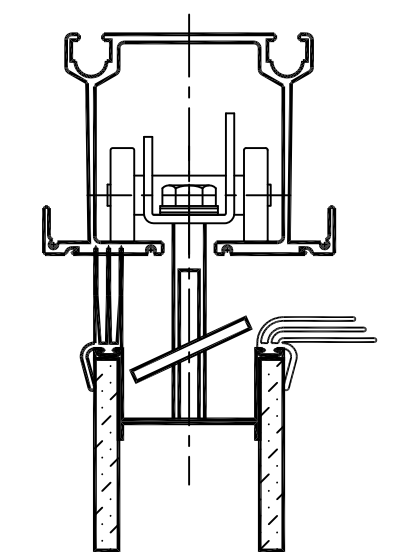
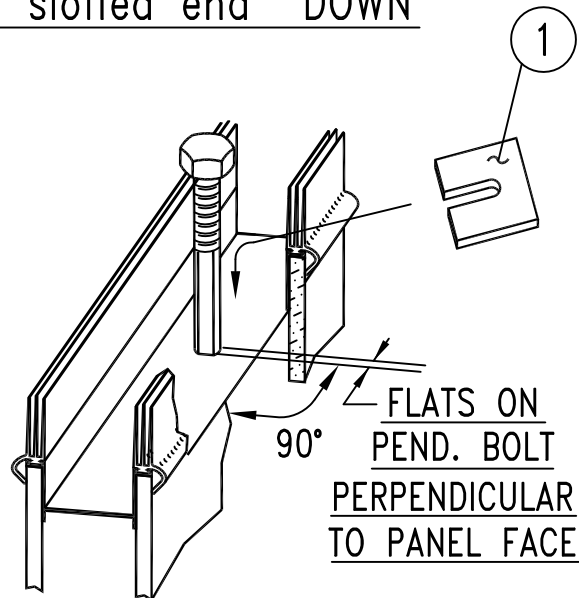
CONFIDENTIAL: This drawing and its technical contents are the confidential and exclusive property of PANELFOLD, INC. MIAMI, FL, USA and its reproduction or the use or disclosure of its contents without the express written permission of PANELFOLD, INC. is strictly prohibited.

THIRD ANGLE PROJECTION

DESIGN IS IN INCHES

CONFIDENTIAL: this drawing and its technical contents are the confidential and exclusive property of PANELFOLD, INC. MIAMI, FLORIDA, USA, and its reproduction or disclosure of its contents without the express written permission of Panelfold, inc. is strictly prohibited.

plate must be inserted with slotted end "DOWN"

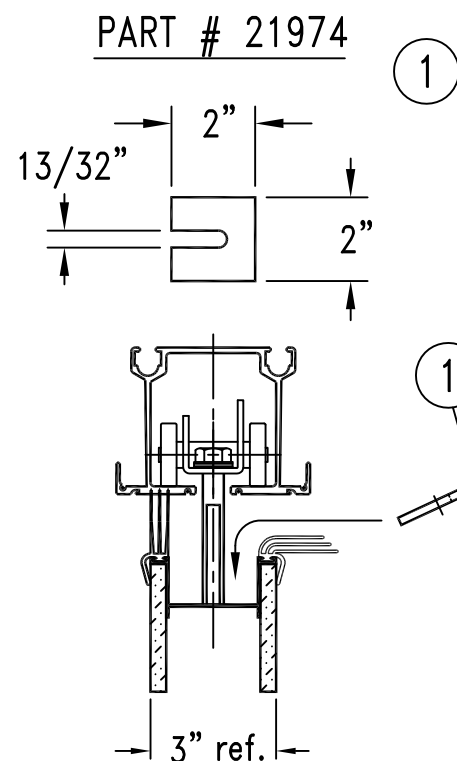


LOCKING PLATE CAN ONLY BE INSERTED AS SHOWN

ENLARGED VIEW

SERIES 400

S.T.C. 38, 42, 44



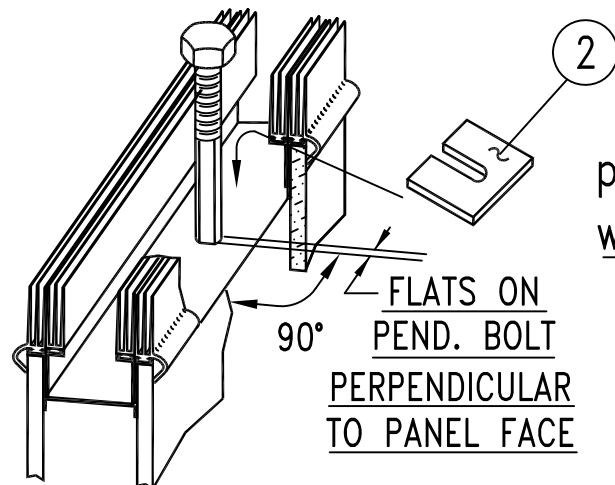
PANELFOLD

P.O. BOX # 683130 MIAMI, FL. 33168
 TEL. # (305) 688-3501 FAX # (305) 688-0185

DWG. # B-23320 9 SEPT '96

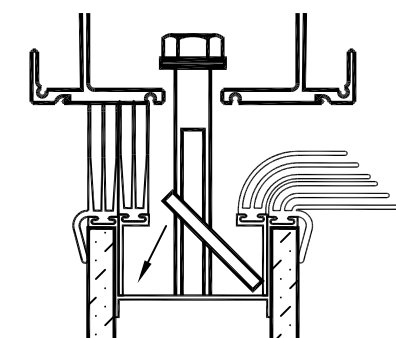
LOCKING PLATE & PENDANT BOLT ASSEMBLY DETAIL SERIES 400

ITEM	PART #	DESCRIPTION
1	21974	STD. LOCKING PLATE SERIES 400 1/2" PEND. BOLT
2	22757	LOCKING PLATE S.T.C. 47 SERIES 400 1/2" PEND. BOLT
3	23235	LOCKING PLATE FOR OPERABLE TOP SEAL SERIES 400, 1/2" PENDANTS



IMPORTANT NOTE:
plate must be inserted with slotted end "UP"

S.T.C. 47
(double top seals)

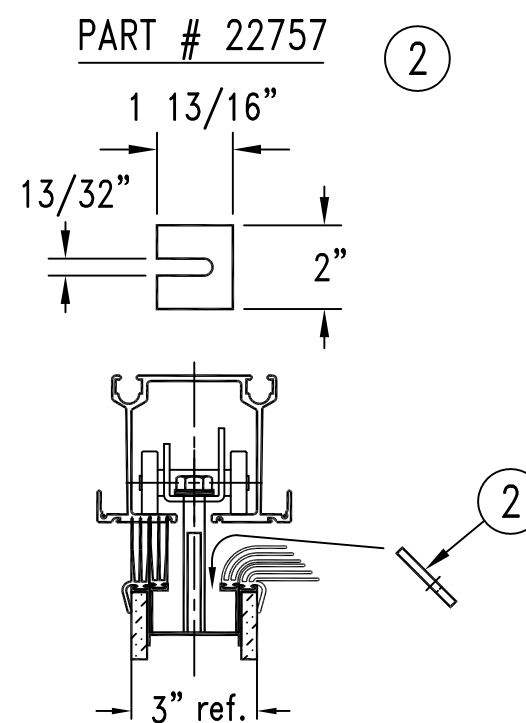


LOCKING PLATE CAN ONLY BE INSERTED AS SHOWN

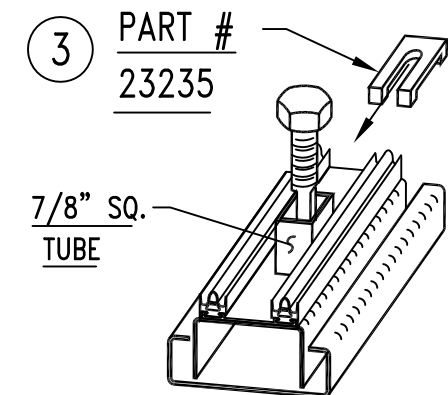
ENLARGED VIEW

SERIES 400

S.T.C. 47 (DOUBLE TOP SEALS)



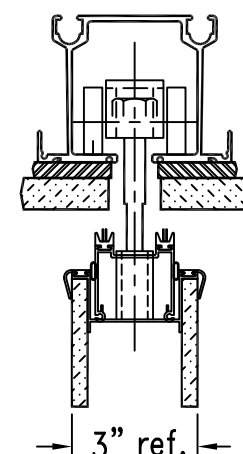
1/2-20 JAMB NUT # 11562



INSERT LOCKING PLATE FROM END OF PANEL

FLATS ON PEND. BOLT PARALLEL TO PANEL FACE

OPERABLE TOP SEAL SERIES 400



PART # 23235

(fits on top of square tube)

OPERABLE TOP SEAL SERIES 400

(SEE SKETCH ABOVE)

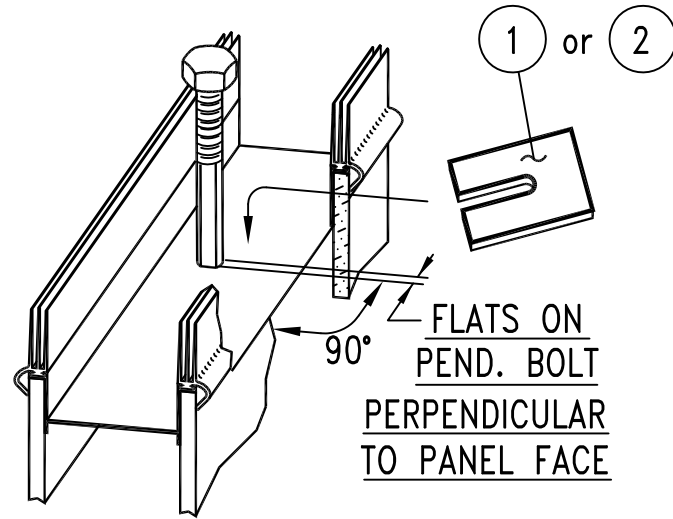
PANELFOLD

P.O. BOX # 683130 MIAMI, FL. 33168
 TEL. # (305) 688-3501 FAX # (305) 688-0185

LOCKING PLATE & PENDANT BOLT ASSEMBLY DETAIL SERIES 500, 600 & 800

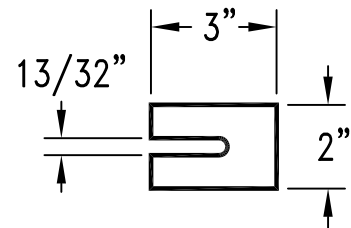
ITEM	PART #	DESCRIPTION
1	22391	LOCKING PLATE SERIES 600 1/2" PEND. BOLT
2	22358	LOCKING PLATE SERIES 600 5/8" PEND. BOLT
3	21974	LOCKING PLATE SERIES 800 1/2" PEND. BOLT
4	21975	LOCKING PLATE SERIES 800 5/8" PEND. BOLT
5	23378	LOCKING PLATE 3" GYM WALL 5/8" PEND. BOLT
6	23235	LOCKING PLATE FOR OPER. TOP SEAL (1/2" BOLT)
	23415	LOCKING PLATE FOR OPER. TOP SEAL (5/8" BOLT)

plate must be inserted
 with slotted end "DOWN"



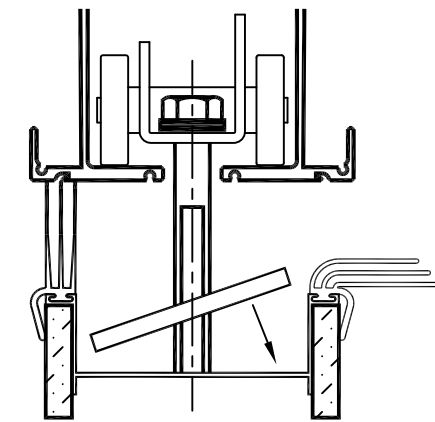
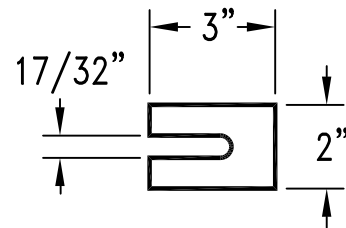
FOR 1/2" PEND. BOLT

① PART # 22391



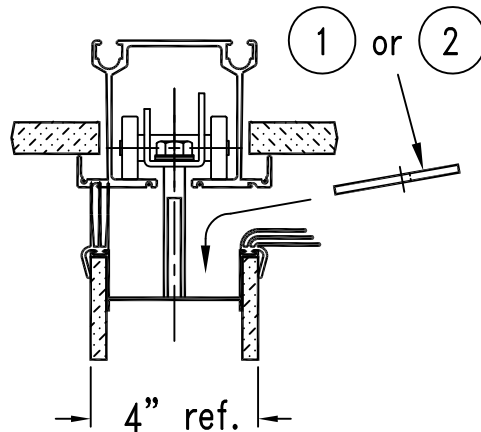
FOR 5/8" PEND. BOLT

② PART # 22358



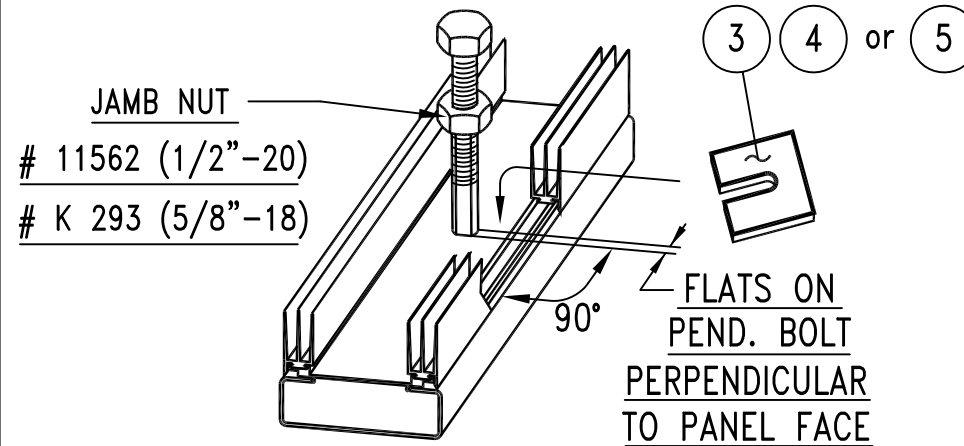
LOCKING PLATE CAN ONLY
 BE INSERTED AS SHOWN

ENLARGED VIEW



SERIES 600

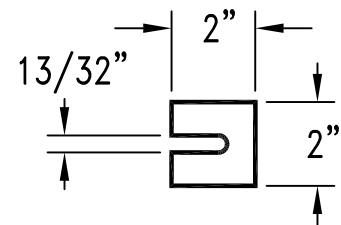
plate must be inserted
 with slotted end "DOWN"



FOR 1/2" PEND. BOLT

③ PART # 21974

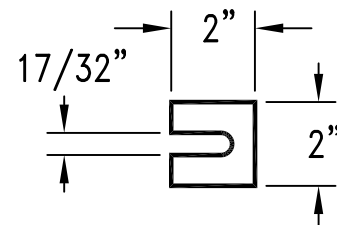
4" steel panel



FOR 5/8" PEND. BOLT

④ PART # 21975

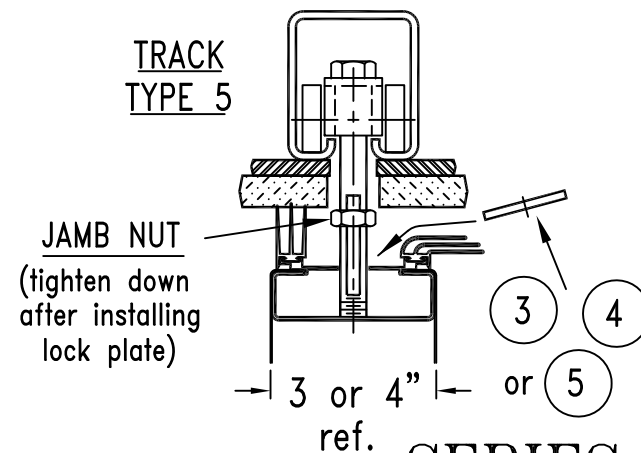
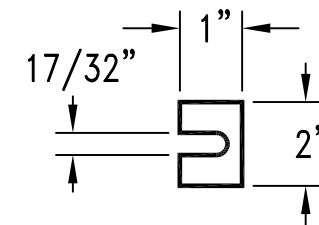
4" steel panel



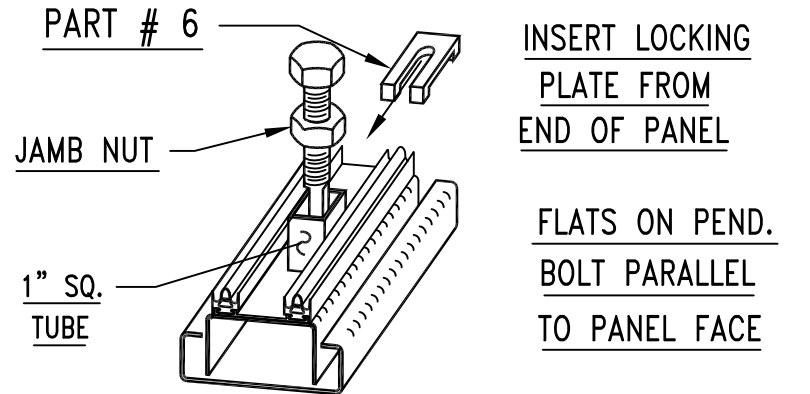
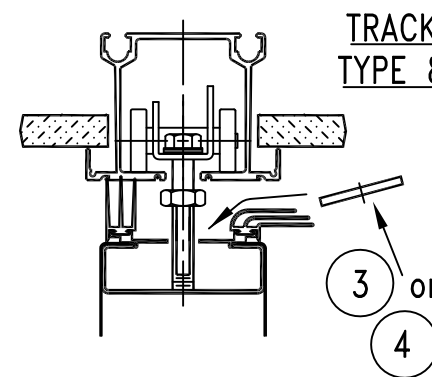
FOR 5/8" PEND. BOLT

⑤ PART # 23378

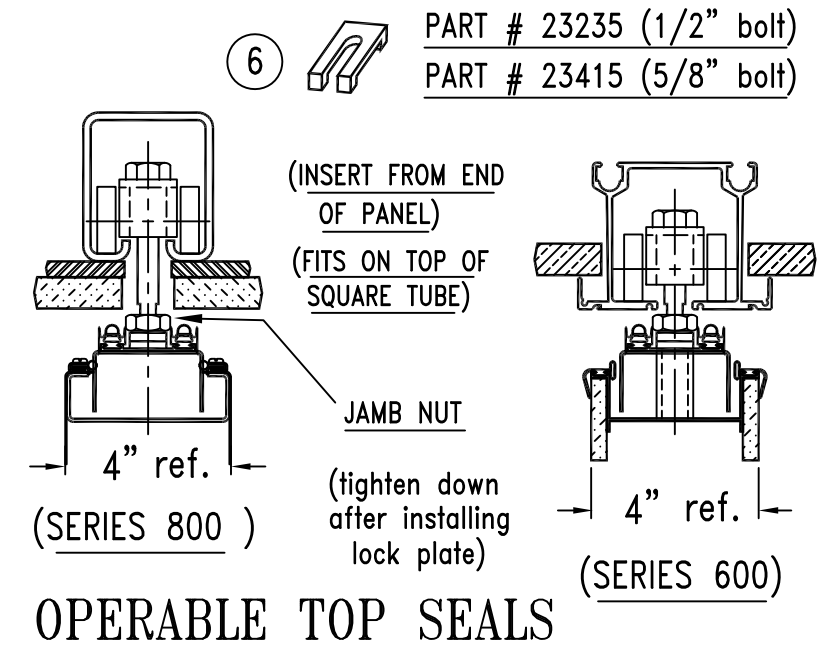
3" steel panel



SERIES 800 & 500



OPERABLE TOP SEALS (SERIES 800 SHOWN)



OPERABLE TOP SEALS